

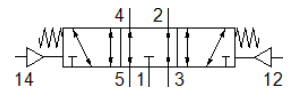
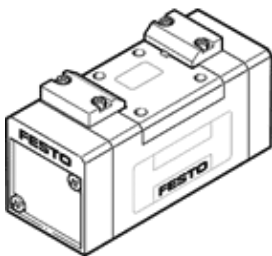
pneumatic valve

VL-5/3E-D-1-C

Part number: 151011

FESTO

5/3-way function, centre position exhausted



Data sheet

Feature	Value
Valve function	5/3 exhausted
Type of actuation	pneumatic
Width	42 mm
Standard nominal flow rate	1,200 l/min
Operating pressure	-0.9 ... 16 bar
Design structure	Piston slide
Type of reset	mechanical spring
Authorisation	UL - Recognized (OL)
Maritime classification	see certificate
Nominal size	8 mm
Grid dimension	43 mm
Exhaust-air function	throttleable
Sealing principle	soft
Assembly position	Any
Conforms to standard	ISO 5599-1
Manual override	None
ISO code	108
Type of piloting	direct
Flow direction	reversible
Overlap	Positive overlap
Pilot pressure	3 ... 16 bar
Switching time off	45 ms
Switching time on	7 ms
Operating medium	Compressed air in accordance with ISO8573-1:2010 [7:4:4]
Note on operating and pilot medium	Lubricated operation possible (subsequently required for further operation)
Vibration resistance	Transport application test at severity level 1 in accordance with FN 942017-4 and EN 60068-2-6
Shock resistance	Shock test with severity level 2 in accordance with FN 942017-5 and EN 60068-2-27
Medium temperature	-10 ... 60 °C
Sound pressure level	85 dB(A)
Pilot medium	Compressed air in accordance with ISO8573-1:2010 [7:4:4]
Ambient temperature	-10 ... 60 °C
Product weight	320 g
Mounting type	On sub-base with through hole
Pilot air port 12	Connection plate size 1 as per ISO 5599-1
Pilot air port 14	Connection plate size 1 as per ISO 5599-1
Pneumatic connection, port 1	Connection plate size 1 as per ISO 5599-1
Pneumatic connection, port 2	Connection plate size 1 as per ISO 5599-1
Pneumatic connection, port 3	Connection plate size 1 as per ISO 5599-1
Pneumatic connection, port 4	Connection plate size 1 as per ISO 5599-1
Pneumatic connection, port 5	Connection plate size 1 as per ISO 5599-1
Materials note	Conforms to RoHS
Material seals	HNBR NBR
Material housing	Aluminium die cast